

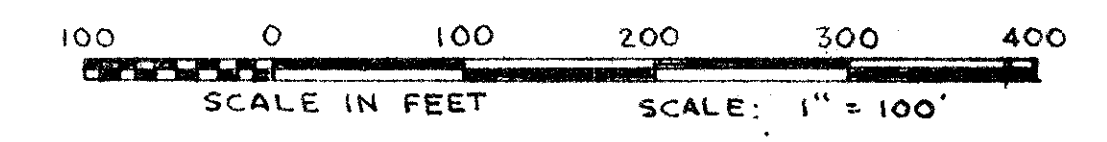
GREENBRIAR I OF SHERBROOKE

P.U.D.

IN PART OF SEC'S 5 & 6, TWP 45 S., RGE. 42 E.

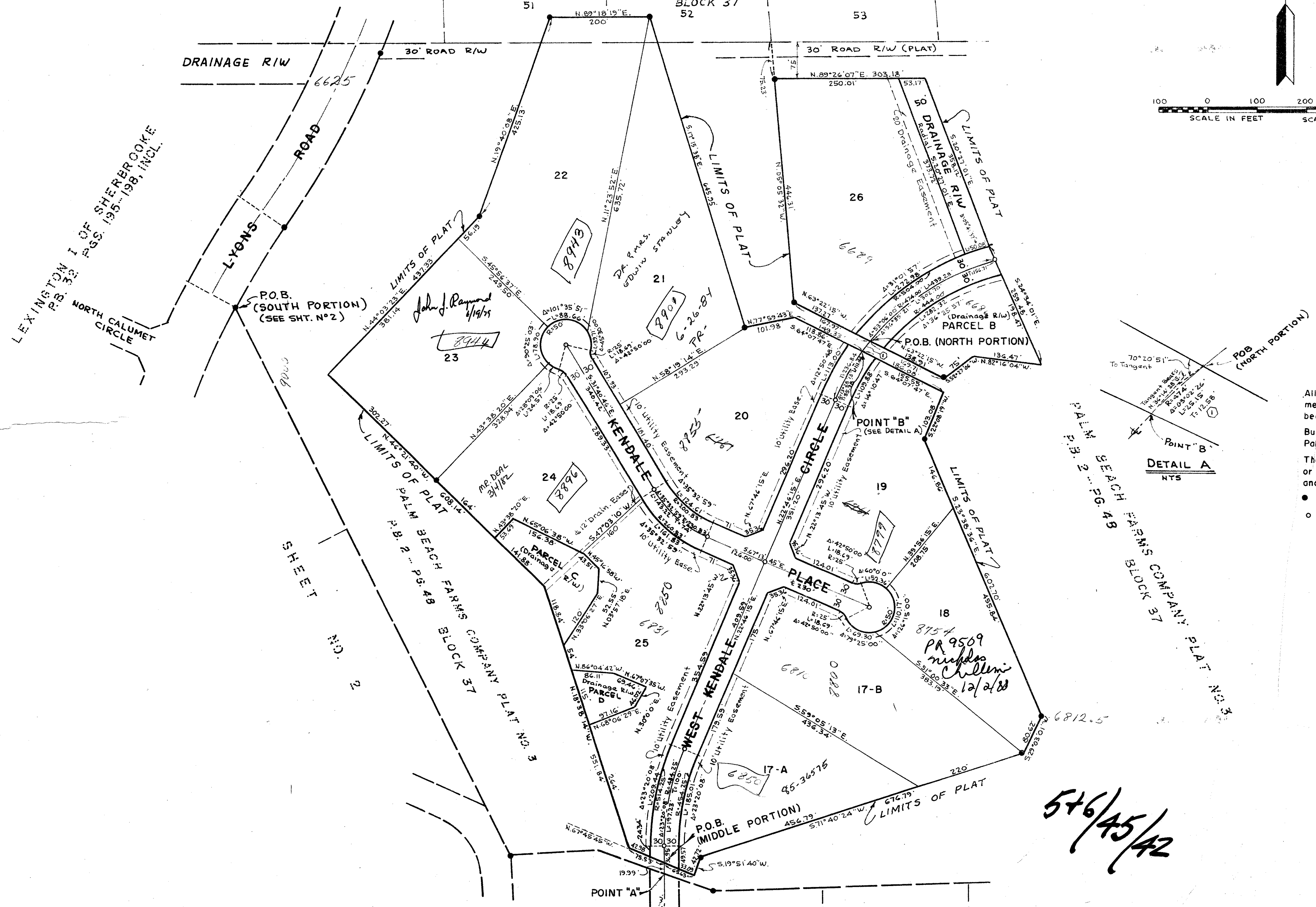
PALM BEACH COUNTY, FLORIDA
IN 3 SHEETS SHEET NO. 3

GEE & JENSON
ENGINEERS-ARCHITECTS-PLANNERS, INC.
WEST PALM BEACH, FLORIDA
MAY 1977



STATE OF FLORIDA
COUNTY OF PALM BEACH
This Plat was filed for record at _____ M.
this _____ day of _____, 1977,
and duly recorded in Plat Book No. _____
on page _____
JOHN B. DUNKLE, Clerk Circuit Court
By _____, D.C.

PALM BEACH FARMS COMPANY PLAT NO. 3 P.B. 2 - PG. 48
BLOCK 37



NOTES
All bearings shown hereon are relative to an assumed meridian with the South Line of S. 31-44-42 bearing S.87°57'15" E.
Building Setback Lines shall be as required by Palm Beach County Zoning Regulations.
There shall be no buildings or any kind of construction or trees or shrubs placed on Utility Easements and/or Drainage Easements.
● denotes Permanent Reference Monument
○ denotes Permanent Control Point.

49

0309-001

33/57

546/45/42

GREENBRIAR I OF SHERBROOKE